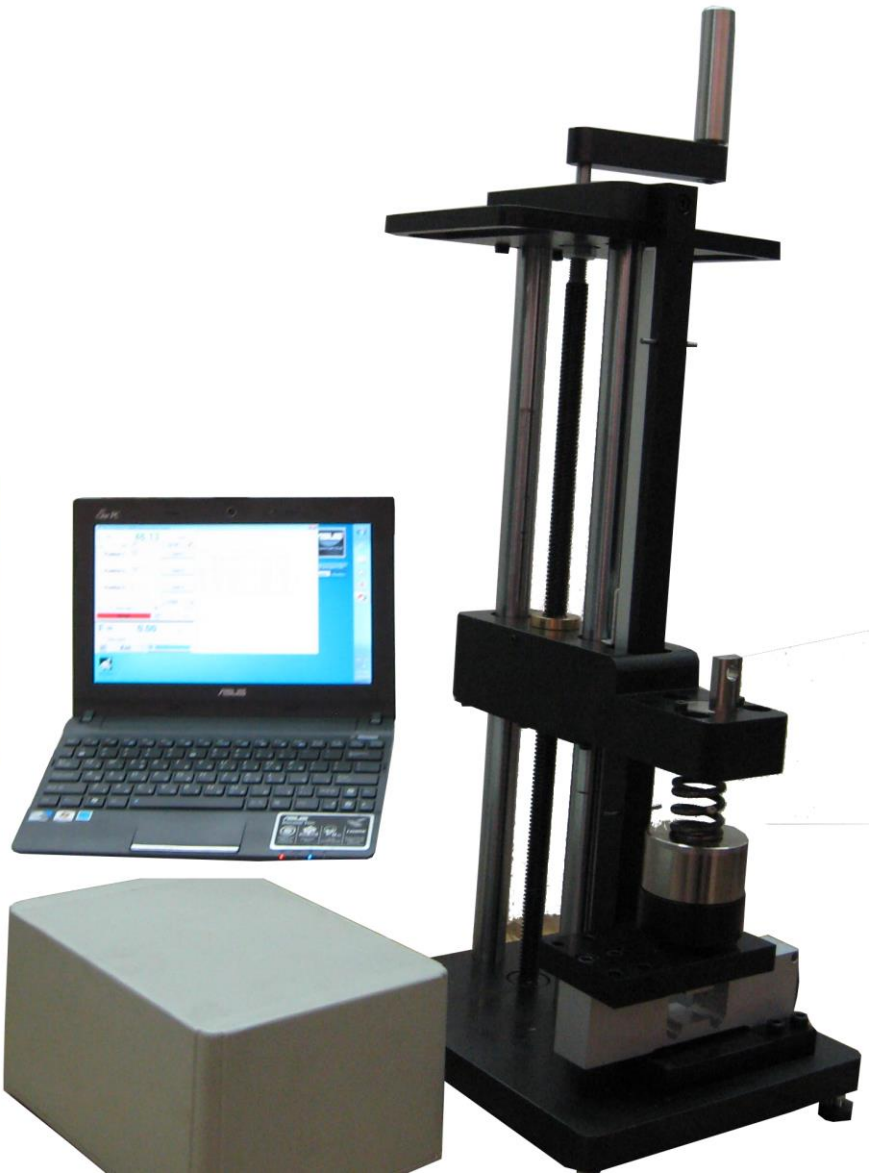
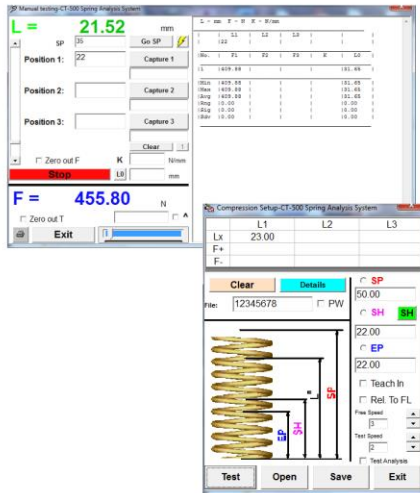


CTMS-2000PC



Specifications

Load

- Load Capacity 2000N (448.5lbf)
- Load Resolution 0.04N (0.00897lbf)
- Load Accuracy $\pm 0.1\text{N}$ ($\pm 0.02243\text{lbf}$) at 20N (4.5lbf)
- Continuous digital display or Force/Load height graphical analysis tools and display
- Safe overload to 150% of FS (compression and tension overload protection at 100% of FS load)

Stroke

- Stroke 200mm (8") Standard
- Resolution: 0.003mm (0.000118") for 200 stroke, - Standard
- Accuracy: $\pm 0.02\text{mm}$ (± 0.00079 ") for 200 stroke,
- Absolute display of load height above a user defined fixed reference.

Platten

Diameter

Free Length

Spring rate

Initial tension

Computer

- 55mm (2.2")
- Automatically determined
- Automatic or manual determination of spring rate (linear analysis), option for characterization of non-linear rates (e.g. conical springs)
- Automatic detection of tension spring initial tension.
- Intel dual Core (minimum) processor
- Serial or USB connection to PC for control and data transfer
- Laptop optional.
- Fully Microsoft Windows XP and Win7 and Win10 compatible

Languages

Software

Features

Units

Test speeds

- English, German, French, Russian and Turkish
- Programmable for automated testing, Includes frelength, initial tension and spring rate results.
- Full reporting and printing capability available.
- On-Line and off-line SPC control charts and Cpk capability testing available.
- Smart self calibration routines
- N, kgf, gf, ozf, lbf – mm, inches
 - Three options available:
 - 6mm (1/4") per handle turn
 - 12mm (1/2") per handle turn
 - 25mm (1") per handle turn

GEARED OPTIONS AVAILABLE TOO

Power

- Power only required to run PC,
- PC powers tester via USB connection



WWW.SASTESTERS.COM

Ph: +972-9-7603895

Fax: +972-9-7604849

E-Mail: Info@SASTESTERS.COM