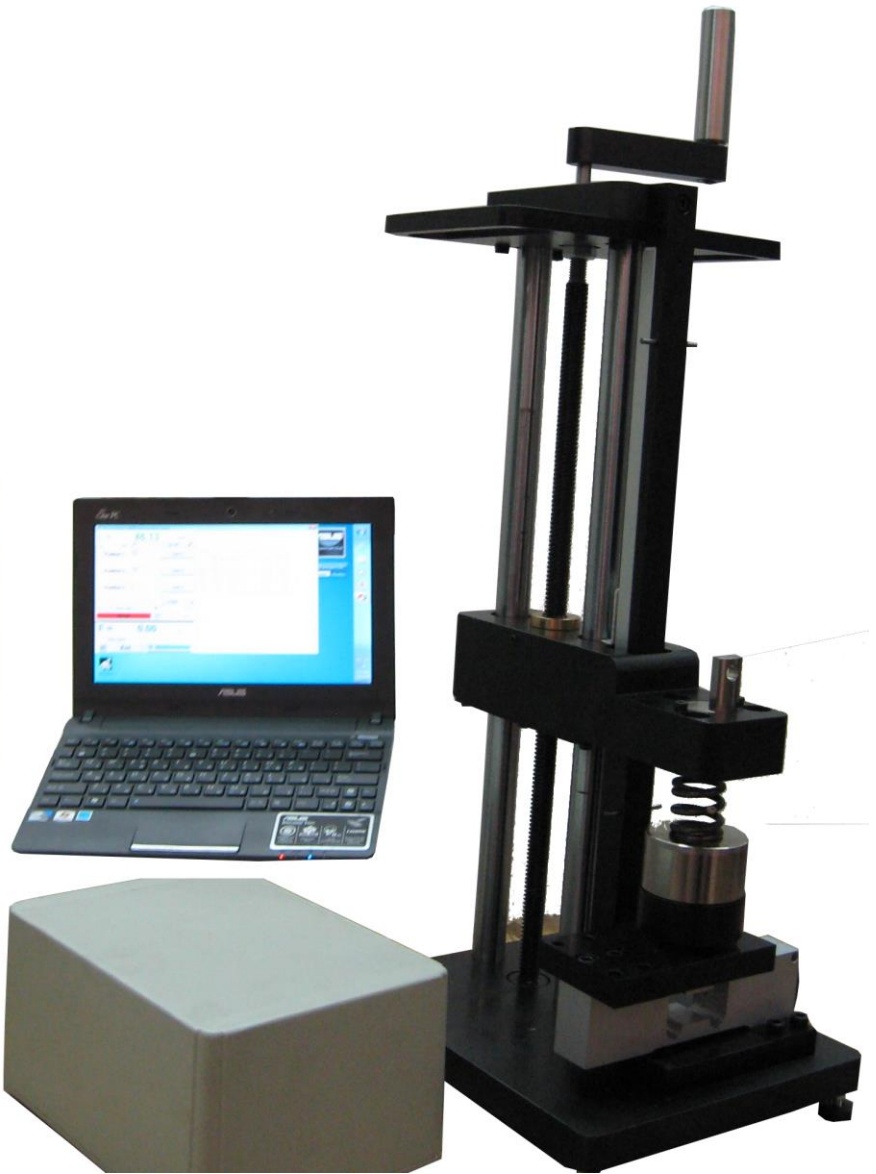
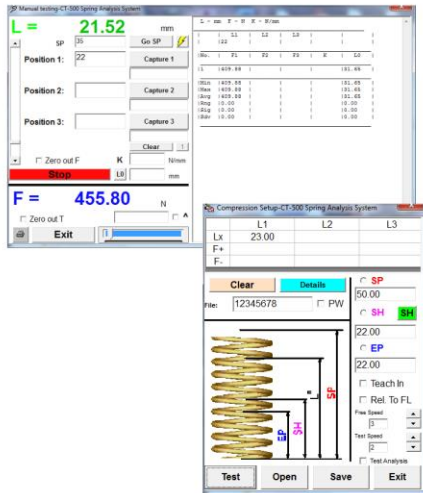


# CTMS-50PC



## Specifications

### Load

- ☐ Load Capacity 50N (11.21lbf)
- ☐ Load Resolution 0.001N (0.000224lbf)
- ☐ Load Accuracy  $\pm 0.0025\text{N}$  ( $\pm 0.000561\text{lbf}$ ) at 0.5N (0.1121lbf)
- ☐ Continuous digital display or Force/Load height graphical analysis tools and display
- ☐ Safe overload to 150% of FS (compression and tension overload protection at 100% of FS load)

### Stroke

- ☐ Stroke 200mm (8") Standard
- ☐ Resolution: 0.003mm (0.000118") for 200 stroke, - Standard
- ☐ Accuracy:  $\pm 0.02\text{mm}$  ( $\pm 0.00079"$ ) for 200 stroke,
- ☐ Absolute display of load height above a user defined fixed reference.

### Platten Diameter Free Length Spring rate Initial tension Computer

- ☐ 55mm (2.2")
- ☐ Automatically determined
- ☐ Automatic or manual determination of spring rate (linear analysis), option for characterization of non-linear rates (e.g. conical springs)
- ☐ Automatic detection of tension spring initial tension.
- ☐ Intel dual Core (minimum) processor
- ☐ Serial or USB connection to PC for control and data transfer
- ☐ Laptop optional.
- ☐ Fully Microsoft Windows XP and Win7 and Win10 compatible

### Languages

- ☐ English, German, French, Russian and Turkish
- ☐ Programmable for automated testing, Includes frelength, initial tension and spring rate results.
- ☐ Full reporting and printing capability available.
- ☐ On-Line and off-line SPC control charts and Cpk capability testing available.
- ☐ Smart self calibration routines

### Software Features Units Test speeds

- ☐ N, kgf, gf, ozf, lbf – mm, inches
- ☐ Three options available:
  - 6mm (1/4") per handle turn
  - 12mm (1/2") per handle turn
  - 25mm (1") per handle turn

### GEARED OPTIONS AVAILABLE TOO

### Power

- ☐ Power only required to run PC,
- ☐ PC powers tester via USB connection



[WWW.SASTESTERS.COM](http://WWW.SASTESTERS.COM)

Ph: +972-9-7603895

Fax: +972-9-7604849

E-Mail: Info@SASTESTERS.COM