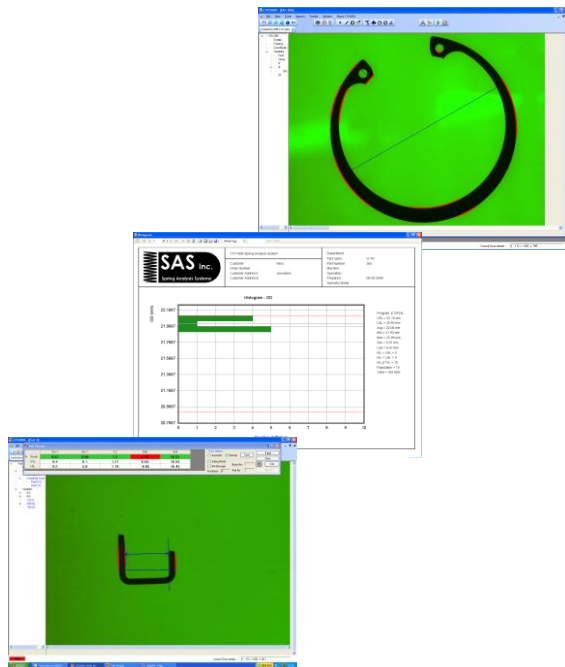


# CTV2KM-16 Vision System



**Includes  
automatic and  
manual part  
recognition**



# Specifications

<b>Camera Type</b>	5Mpixel Industrial CMOS
<b>Lens</b>	1-7808 telecentric
<b>Lens connection</b>	C type
<b>Minimum part size</b>	0.1 x 0.1mm 0.004" x 0.004"
<b>Maximum part size</b>	16 x 12mm 0.62" x 0.47"
<b>Includes Z servo axis</b>	Manual Z Motion- Standard
<b>Includes XY servo axes</b>	No
<b>Vision space resolution</b>	0.006mm 0.00025"
<b>Vision space accuracy</b>	±0.001mm (±0.000039") only with sub-pixel interpolation
<b>Includes SPC</b>	Yes
<b>User Interface</b>	19" Wide LCD display
<b>PC minimum configuration</b>	Intel Core 2 Duo, 2.66GHz, 4Gbyte RAM 500Gbyte HDD
<b>Operating System</b>	Windows Win 7 Pro, Win 10 Pro
<b>Optional Components</b>	<ul style="list-style-type: none"><li>• Industrial enclosure for PC, required for shop-floor use.</li><li>• Programmable IO Interface including IO hardware</li><li>• Programmable front ring light.</li></ul>
<b>Languages</b>	English, German, Turkish and Russian (translation to other languages available).



[WWW.SASTESTERS.COM](http://WWW.SASTESTERS.COM)

Ph: +972-9-7603895

Fax: +972-9-7604849

E-Mail: [Info@SASTESTERS.COM](mailto:Info@SASTESTERS.COM)

Specifications may change without notice